

The background of the image is a composite of three scenes related to global supply chain logistics. On the left, there is a tall stack of shipping containers in various colors (blue, red, white). In the center, a semi-truck is shown in motion, with light trails indicating it is moving quickly. On the right, a large cargo ship is docked at a pier, with a crane visible in the background. The overall scene is set against a warm, sunset-like sky.

***IntelliTrans***

**GLOBAL SUPPLY CHAIN  
TRANSPARENCY**

**25+ YEARS OF SUPPLY CHAIN LEADERSHIP**



# INTRODUCTION

LITTLE ROCK,  
AR

ATLANTA,  
GA

LONDON,  
UK

GOTHENBURG,  
SWEDEN

Headquarters in Atlanta, GA;  
offices in Little Rock, AR;  
London, UK; Gothenburg, Sweden

In 2018, IntelliTrans  
now reports directly to  
Roper Technologies

Over 200 customers,  
\$25B in freight under  
management and  
provide visibility to  
12M+ shipments/year

IntelliTrans  
Founded in 1992

Roper acquired TransCore  
in 2004; TransCore  
acquired IntelliTrans in  
April 2006

Strong financial backing while  
retaining entrepreneurial spirit  
NYSE: ROP, [www.ropertech.com](http://www.ropertech.com)  
\$4.9B revenue, \$29B market cap, 28.4 P/E ratio

IntelliTrans Provides SaaS Transportation  
Management Systems & Services



# INTELLITRANS BUSINESS STRATEGY



- Bulk and Break-Bulk Industry Experts
- Shipper's Agent - Align Interest with Customers
- Ensure Complete, Timely, Accurate Data
- Automate Business Processes
- Improve Pro-Active Customer Service

Reduce your spend by 3% - 6%



# INTELLITRANS

Technology-Enabled Transportation Management Services Company



**VISIBILITY**



**TMS**



**INVENTORY**

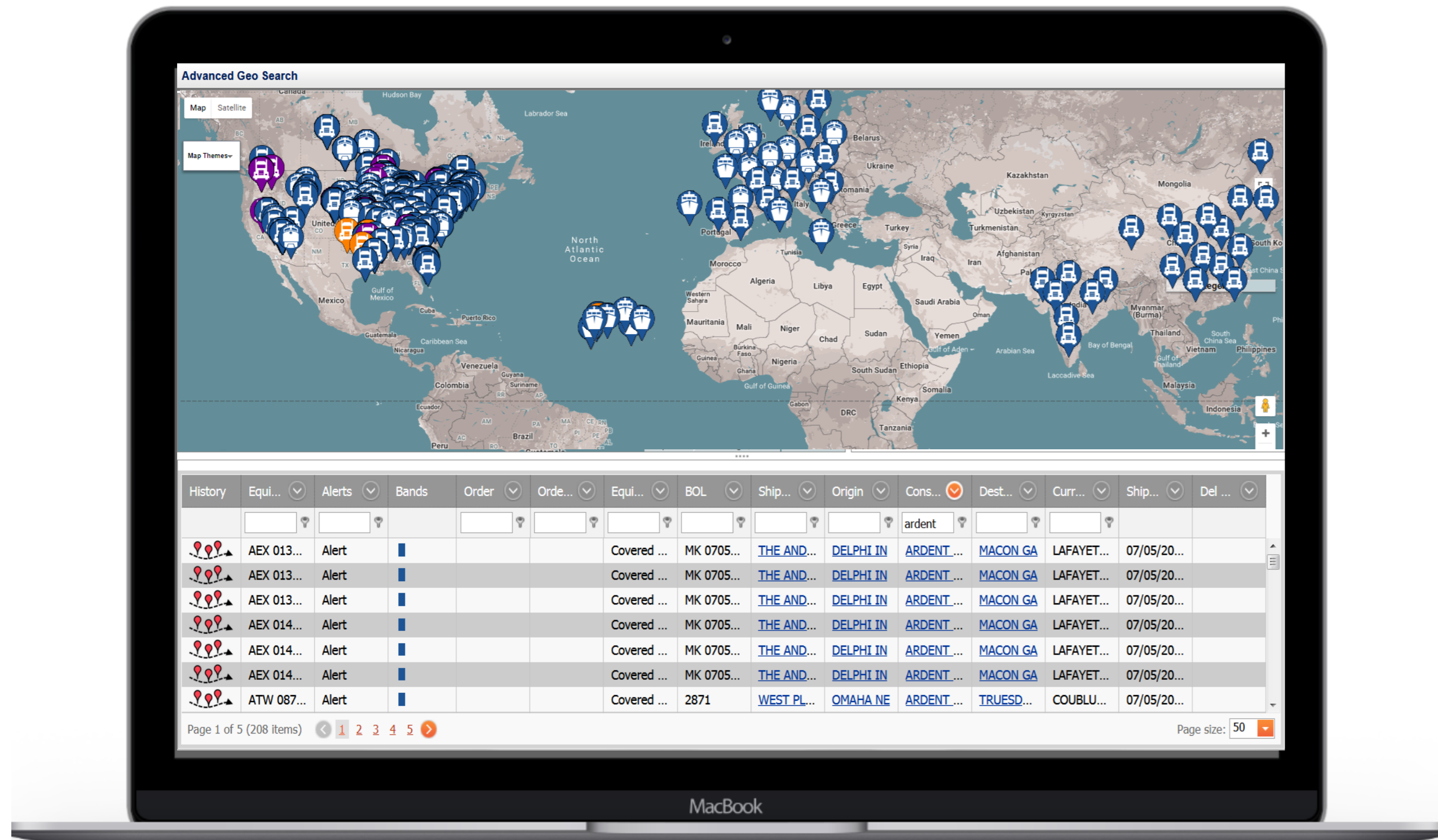


**SERVICES**



# VISIBILITY

Focus on data timeliness, completeness, and accuracy combined with the right people, processes, and technology to drive customer success.



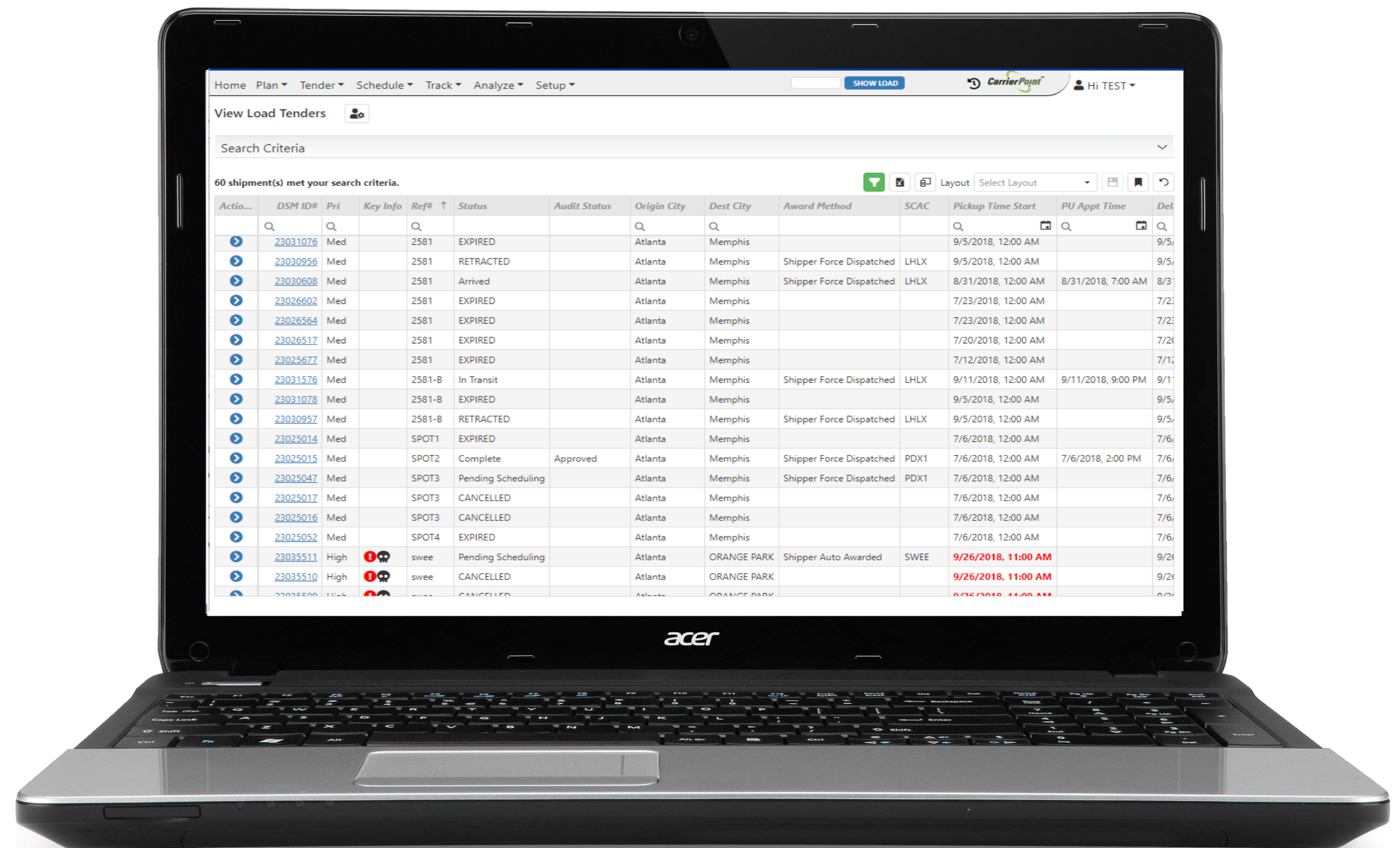
- Control Tower View
- Tracking & Tracing – All Modes
- Data Completion Services
- Proactive Management Services
- Alerts, Queries, & Ad-hoc Reporting
- Pipeline Reporting
- Analytics & Scorecards
- Hardware Integration



# TMS

Designed to Deliver Real-Time Communication

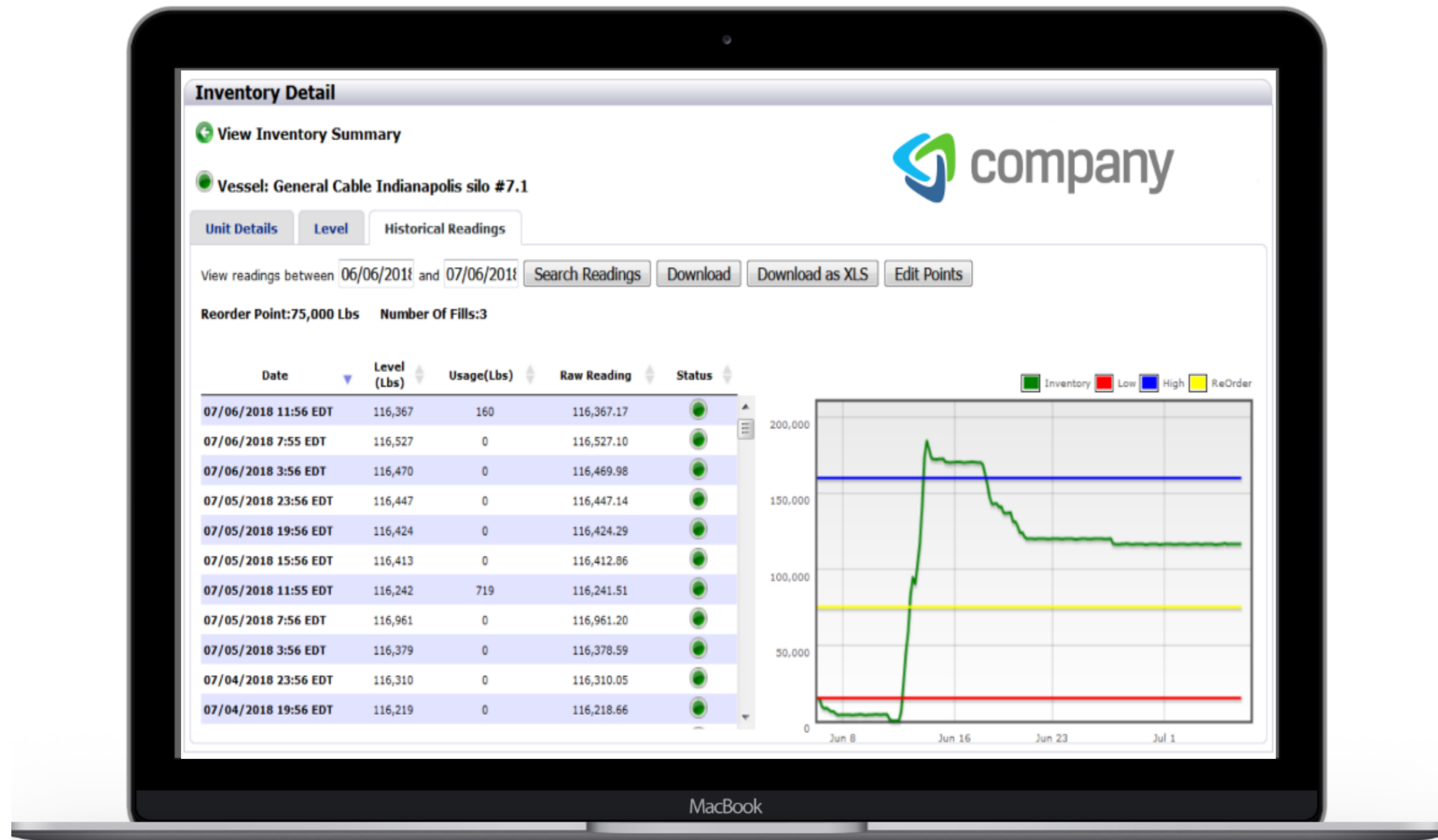
- Contract Management
- Freight Rating
- Shipment Consolidation
- Backhaul Matching
- Load Tendering
- Dock / Appointment Scheduling
- Carrier Scorecarding
- Reporting and Analytics





# INVENTORY

Improve Inventory Accuracy and Sales



- Collaborative Planning, Forecasting and Replenishment
- Railcar Repair Shop
- Warehouse / Transload Management
- Silo Telemetry
- Yard Management
- Sensor Alerts
- Reporting and Analytics



# SERVICES

Customers Typically Understaffed to Drive Cost-Out and Process Improvements

- Logistics Cost-Out Consulting
- Capacity Management
- Carrier Compliance
- Intervention
- Dispatch Management and Execution
- Rate Negotiations
- Invoice Auditing and Payment
- Supply Chain Health Check

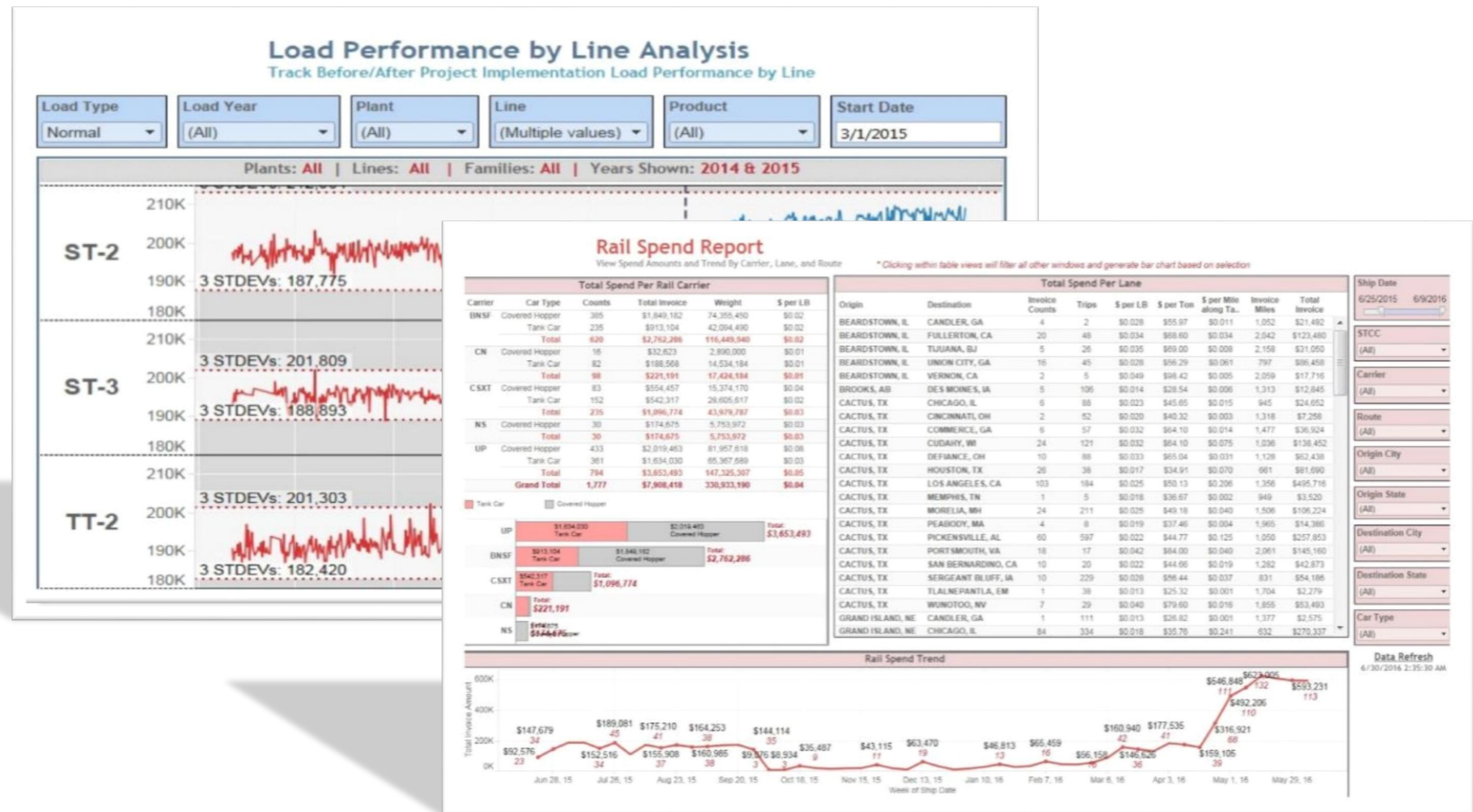




# REPORTING AND ANALYTICS

Drive Costs Out Of Your Global Supply Chain

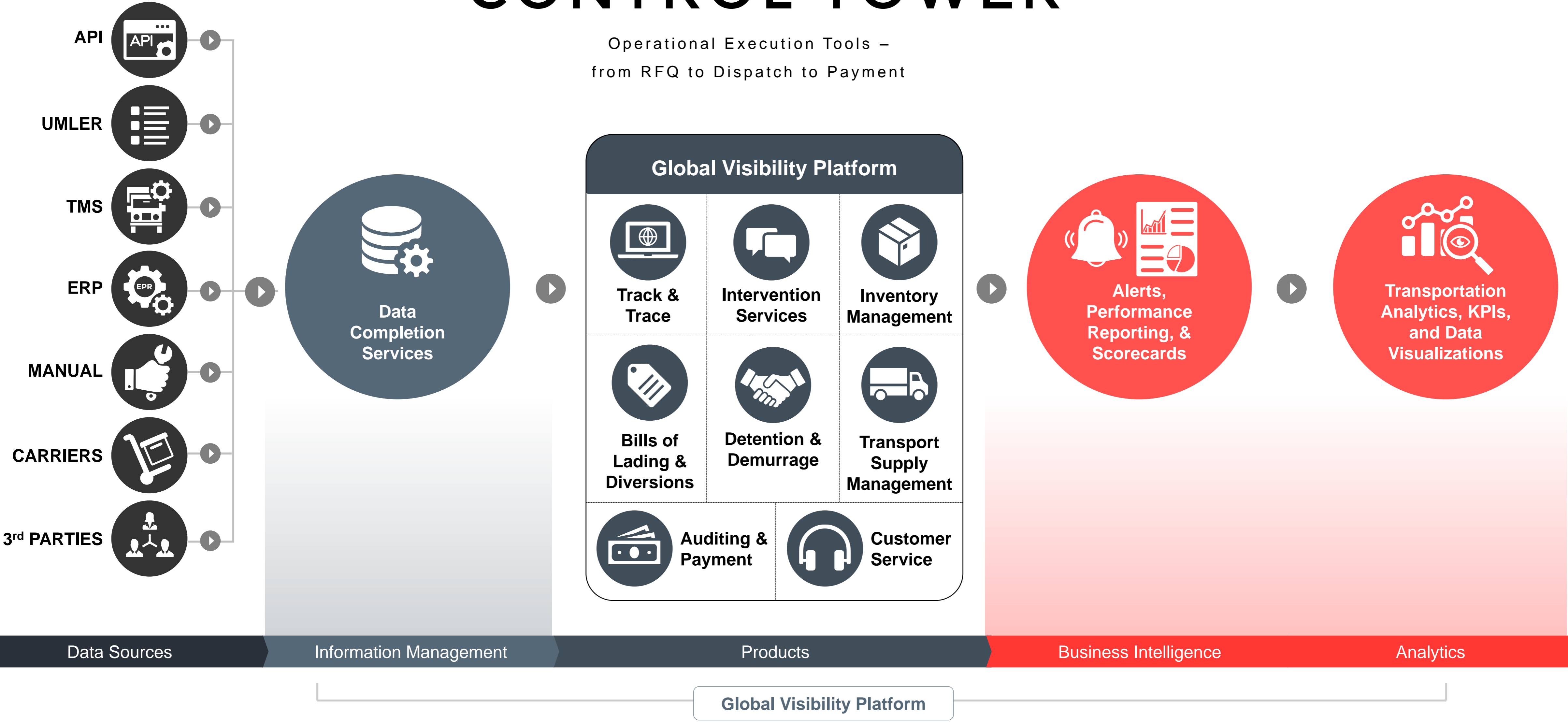
- Tactical and Strategic
- Cost Allocation
- Asset Utilization
- Spend Management
- Carrier Scorecards
- Customer Scorecards
- Financial Analysis





# CONTROL TOWER

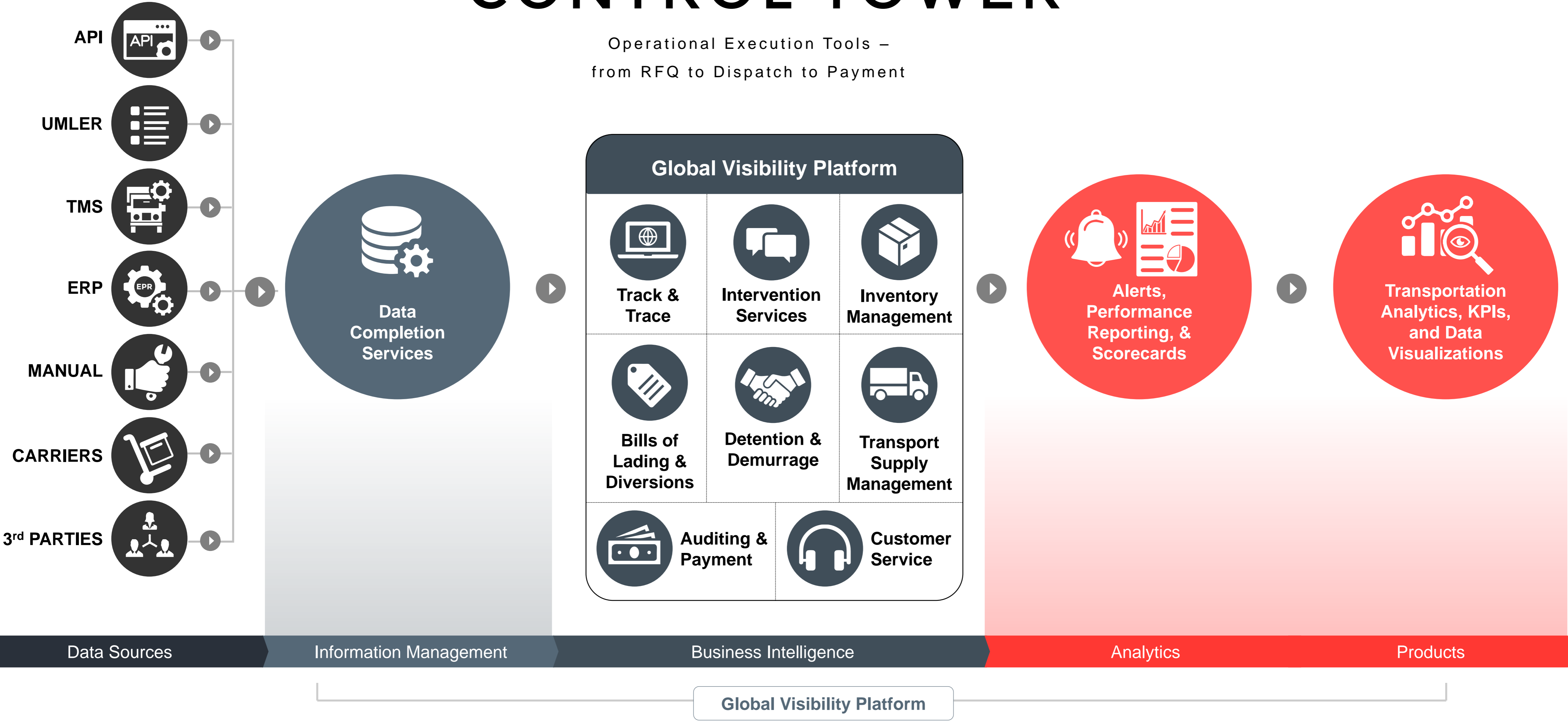
Operational Execution Tools –  
from RFQ to Dispatch to Payment





# CONTROL TOWER

Operational Execution Tools –  
from RFQ to Dispatch to Payment





# WHAT DIFFERENTIATES INTELLITRANS



Longevity – IntelliTrans has been providing multi-modal visibility since 1992



Industry knowledge/influence – Track 50% of the North American rail fleet on any given day



Assigned Customer Success Manager



Deep financial backing – A wholly-owned subsidiary of Roper Technologies



DAT – sister company – benchmarking, carrier compliance



Focused on bulk and break commodities



Ease of implementation



Business strategy focused on aligning our interests with our customers



# *IntelliTrans*

We provide a unified and proactive way to integrate shipping and inventory needs across all modes of transportation.

• ALIGN INTERESTS WITH CUSTOMERS • DRIVE EFFICIENCIES • ENSURE COMPLETE AND TIMELY DATA • DELIVER COST OUT TRANSPORTATION • 100% TRANSPARENT